

light up your business

# Polaris

## digital paperless

for **production** and **quality** in manufacturing industries

Sixphere Digitalization and Data Science for Industrial Manufacturing  
Challenge Product recognition in pharmaceutical logistics by COFARES



SIXPHERE



REACH

NEXT GENERATION DATA INCUBATOR

**5%**

## Non-Quality costs.

of **turnover** for two-thirds of manufacturing industries.

AFNOR. Survey on the costs of poor quality in industry

**8%**

## / 10% Time.

spent reviewing documents and look for misplaced files

Own experiments data

# Non digital production...

## No Real-Time

in getting the status of the work in progress (WIP) and operation results

## Poor Accuracy

in getting time and materials consumption or getting values from machines and other devices

## Hard Traceability

and Non-quality Cost managing issues and audits, there are not friendly systems to raise and manage quality issues

## Clumsy Management

assigning tasks to correct resources, planning and organizing teams, accessing the correct tech instructions or normative documentation

**DIG**  **Real time paperless**  
Web components and **paperless engine**

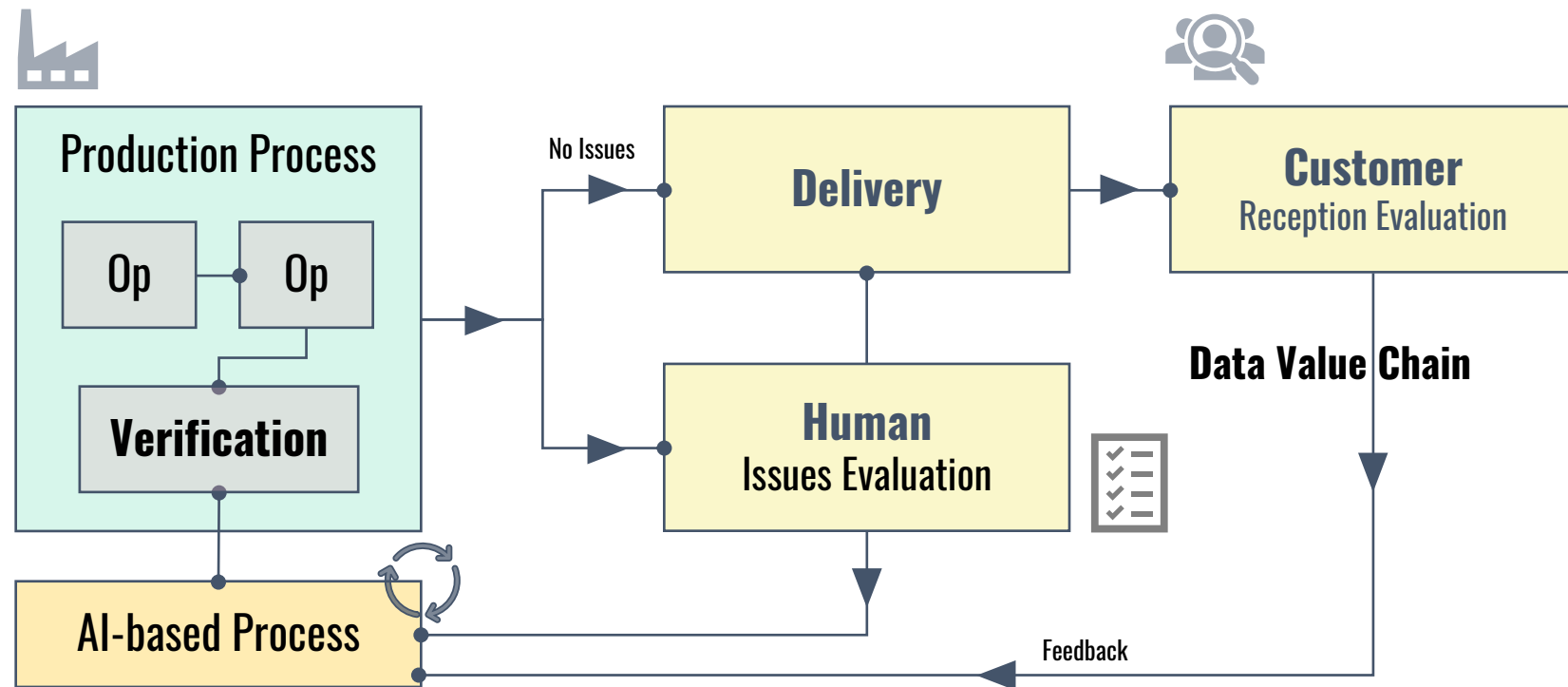
**INT**  **Integration and Tracing**  
Integration with **ERPs** (SAP and Odoo)  
**IoT** devices and machines

**PRE**  **Precision and accuracy**  
Make better and earlier **decisions**



# Polaris

multitask **AI-based** process for **verification** in manufacturing



2018 2022 REVENUE  
**900 K€**

**ALESTIS**  
AEROSPACE  
**Aero Space  
 manufacturing**

Main Tier1 **Airbus** in Spain  
 > **1000** users  
**7** plants **Spain**  
**1** plant **Brazil**

**INVERCUMBRE**  
**Leather  
 manufacturing**

Provider for **Loewe** in Spain  
 > **100** users  
**3** plants **Spain**

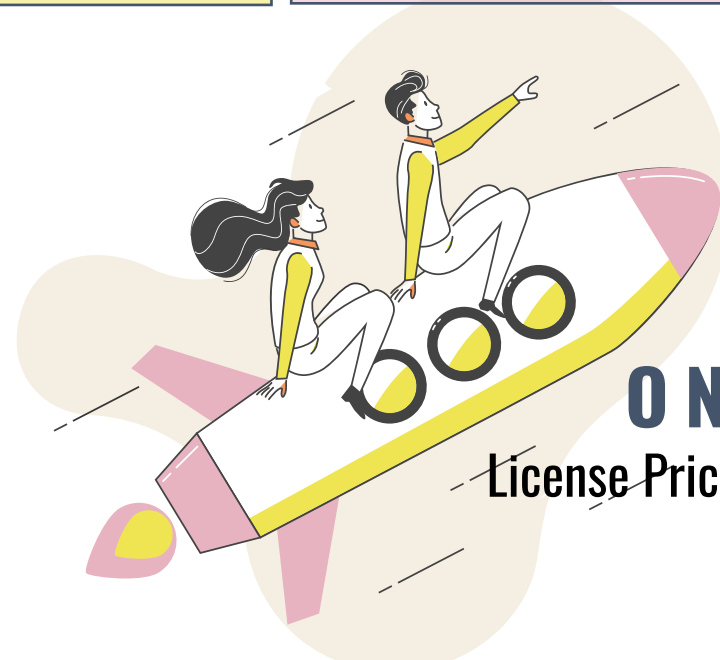
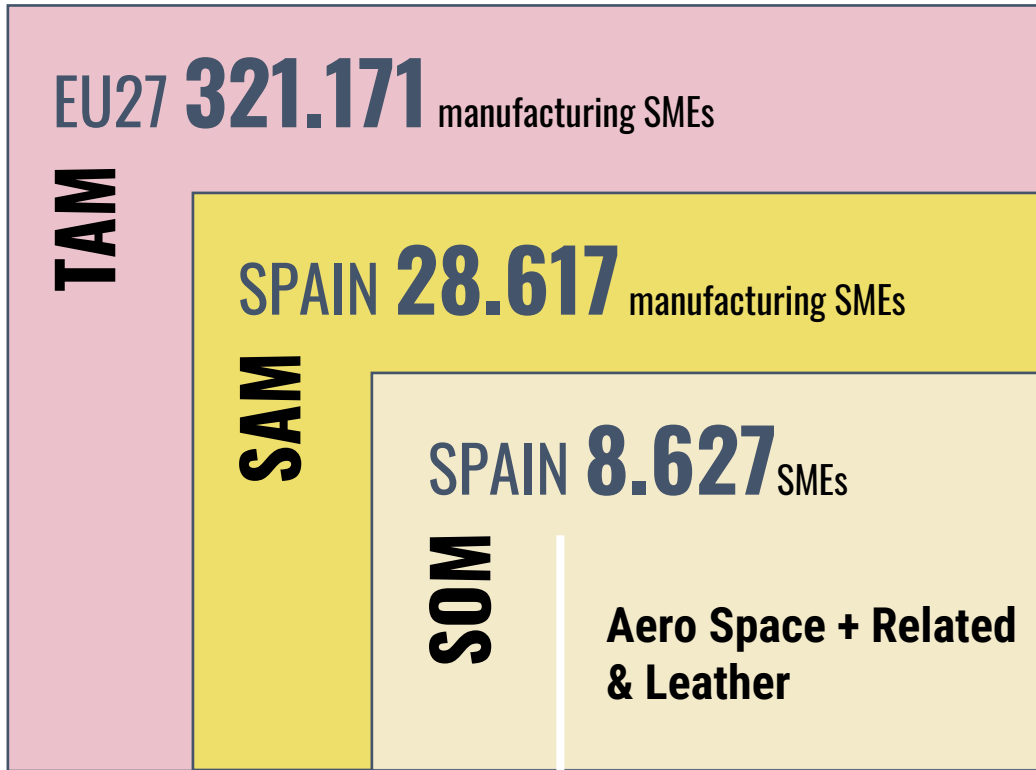
**Acesur**  
INNOVAMOS POR TRADICIÓN

**Agro-food**

Member of **Coosur**  
 > **100** users  
**3** plants **Spain**

Source Eurostat NACE Section C 2019 (sbs\_sc\_ind\_r2)

**Business and Market**



**ON-PREMISE**  
 License Price Model + Integrations

**ON-CLOUD**  
 SaaS Price Model + API Access + Support

**TEAM**

Founder & CEO



Alejandra

MANAGER



Manuel

Founder & CTO



Jesús

HR & MEDIA



Maribel

Founder & COO



José

Founders & Managers

Specialists team



Fernando

Architect & IA



Pablo

Architect & CLOUD



Dani

Architect & DESIGN

Tech team

DEVELOPER



Luis

DEVELOPER



Manuel

DEVELOPER



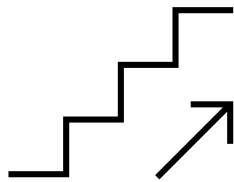
Sergio

IT Consultant

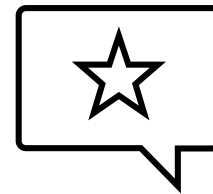


Luis Andrés

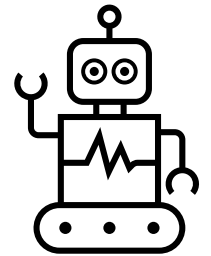
# weaskfor



**Growth  
strategy**



**Industrial  
mentoring**

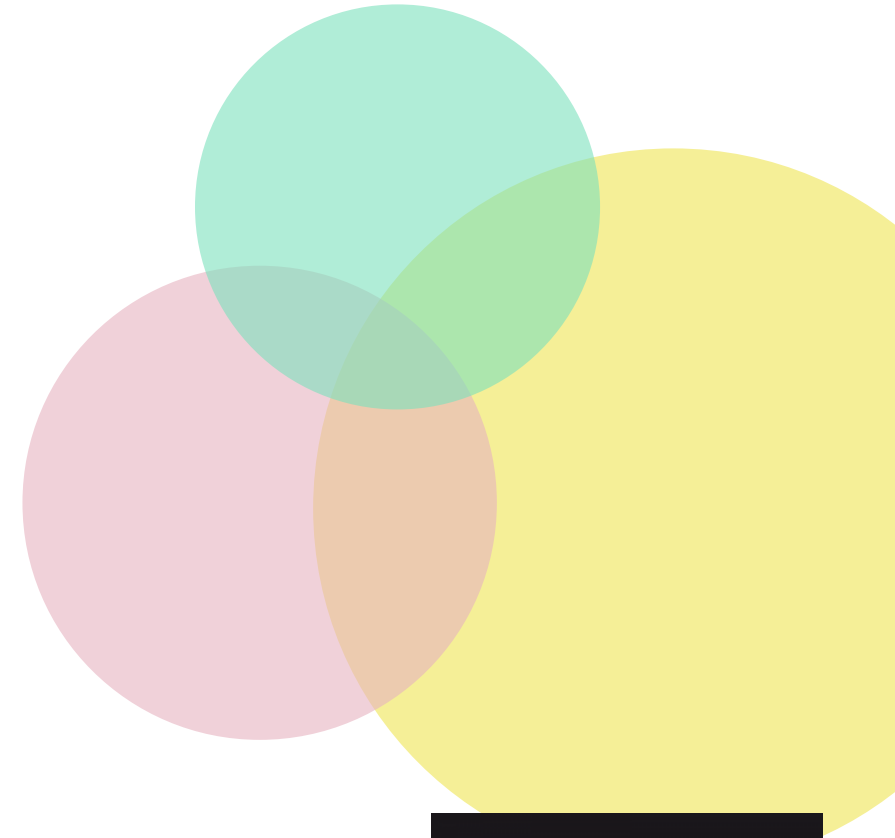


**Founds for AI  
features**



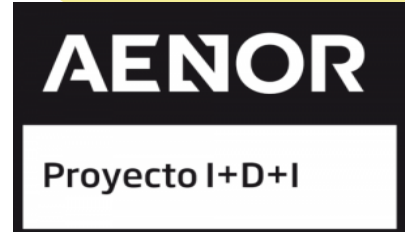
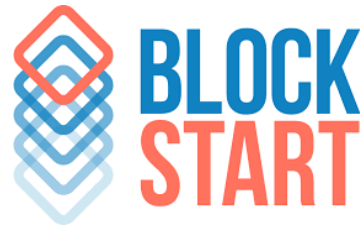
innovation kills boredom

# Let's go!



**PYME INNOVADORA**

Válido hasta el 06 de abril de 2024



sixphere.com 2022

Nuestro proyecto Polaris Industry ha sido certificado por AENOR como proyecto de Investigación y Desarrollo