



SENSE
FINITY

Emergency Management



Reach 3rd Call

Emergency and Risk Management:

sensors, trackers and data integration for data driven decisions

Theme:

REACH-2022-THEMEDRIVEN-CONNECT5_10 - Emergency Management

The problem

Emergency and Crisis



fires



earthquakes



tornados



Decision Central

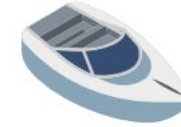
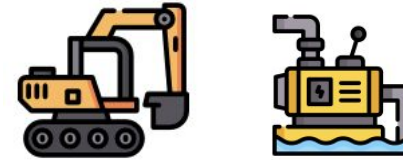


Emergency Responders

Emergency Responders need help



+



public and/or private **assets**:

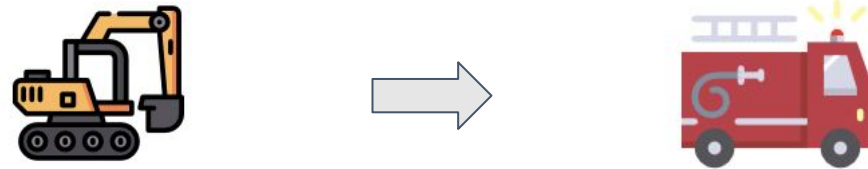
Excavators
Water pumps
Speedboats
etc

Question 1



Any near by?

Question 2



Who needs to know?

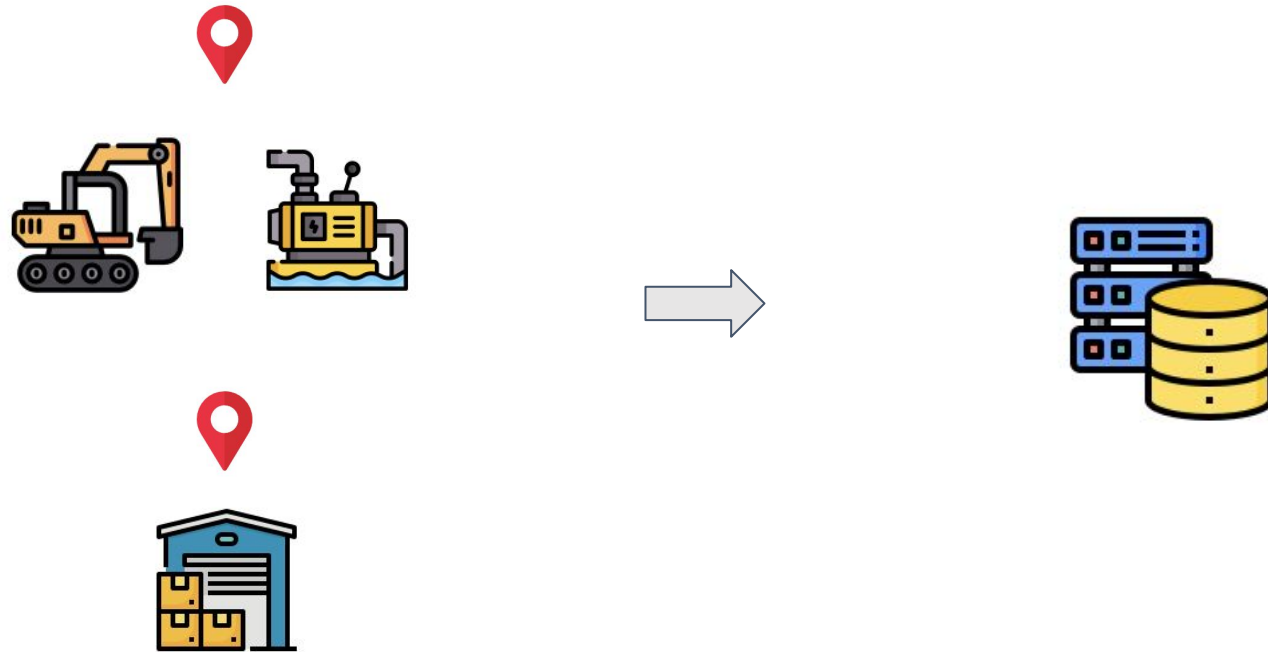
Question 3



Any **risks** nearby?

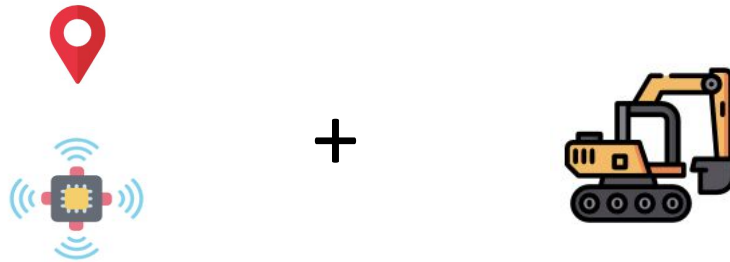
e.g. flammable warehouse!

Solution: IoT!



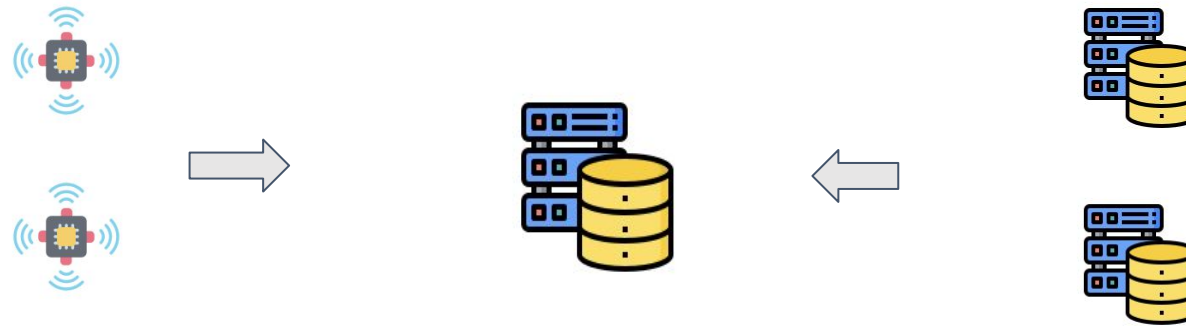
Build a Location Data Hub
of **Helpful assets** and **Risk assets**

Step 1: add IoT trackers



Tracker will send GPS **location**

Step 2: integrate all data

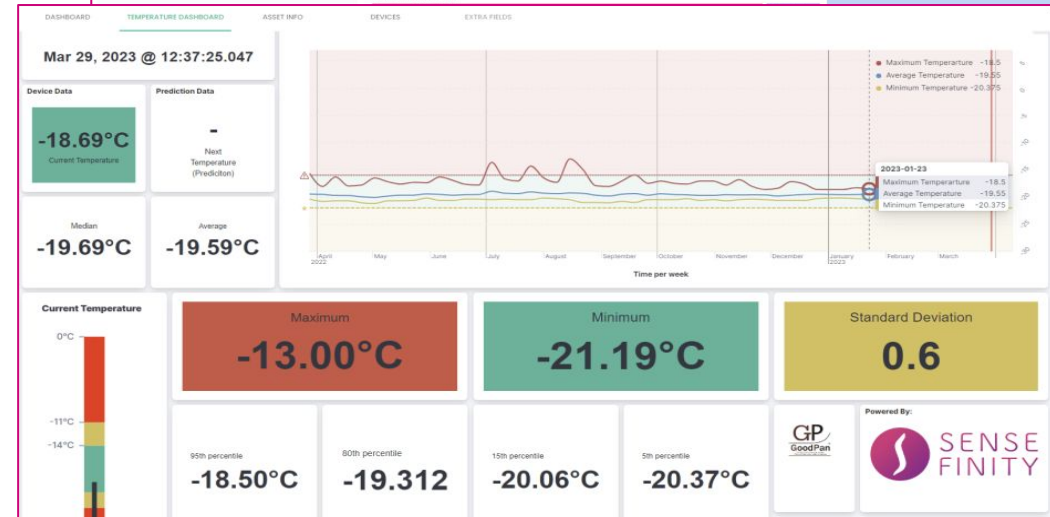
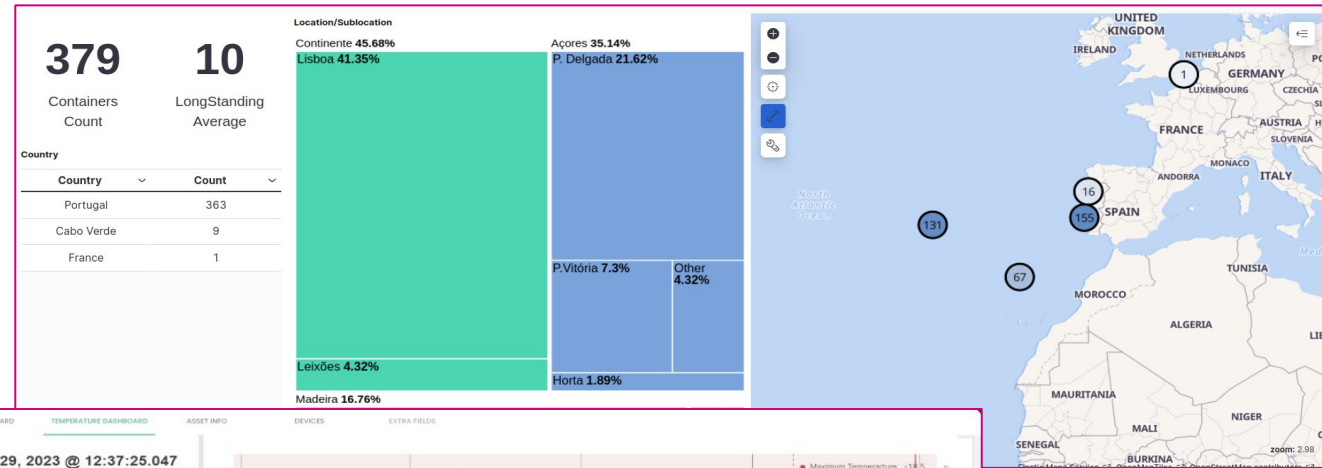


Location data sets from **IoT trackers**
 +
 Location data sets that already exists

The application

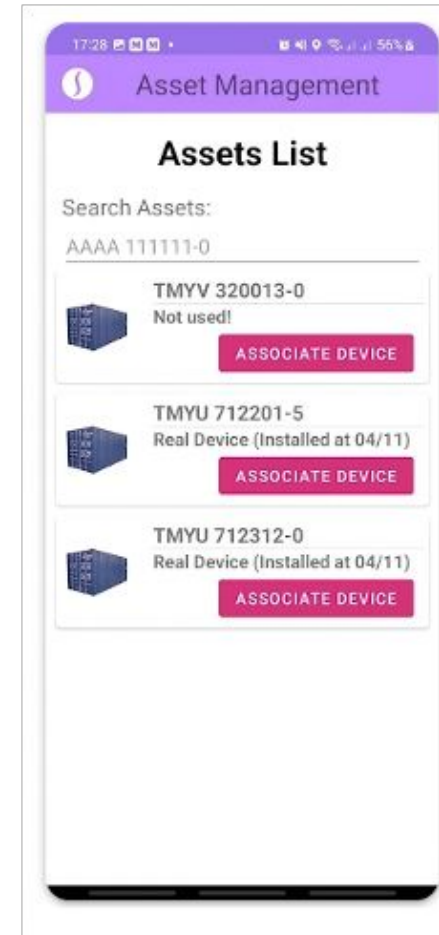
History and Statistics

KPIs
 Maps with geolocation
 Charts with thresholds



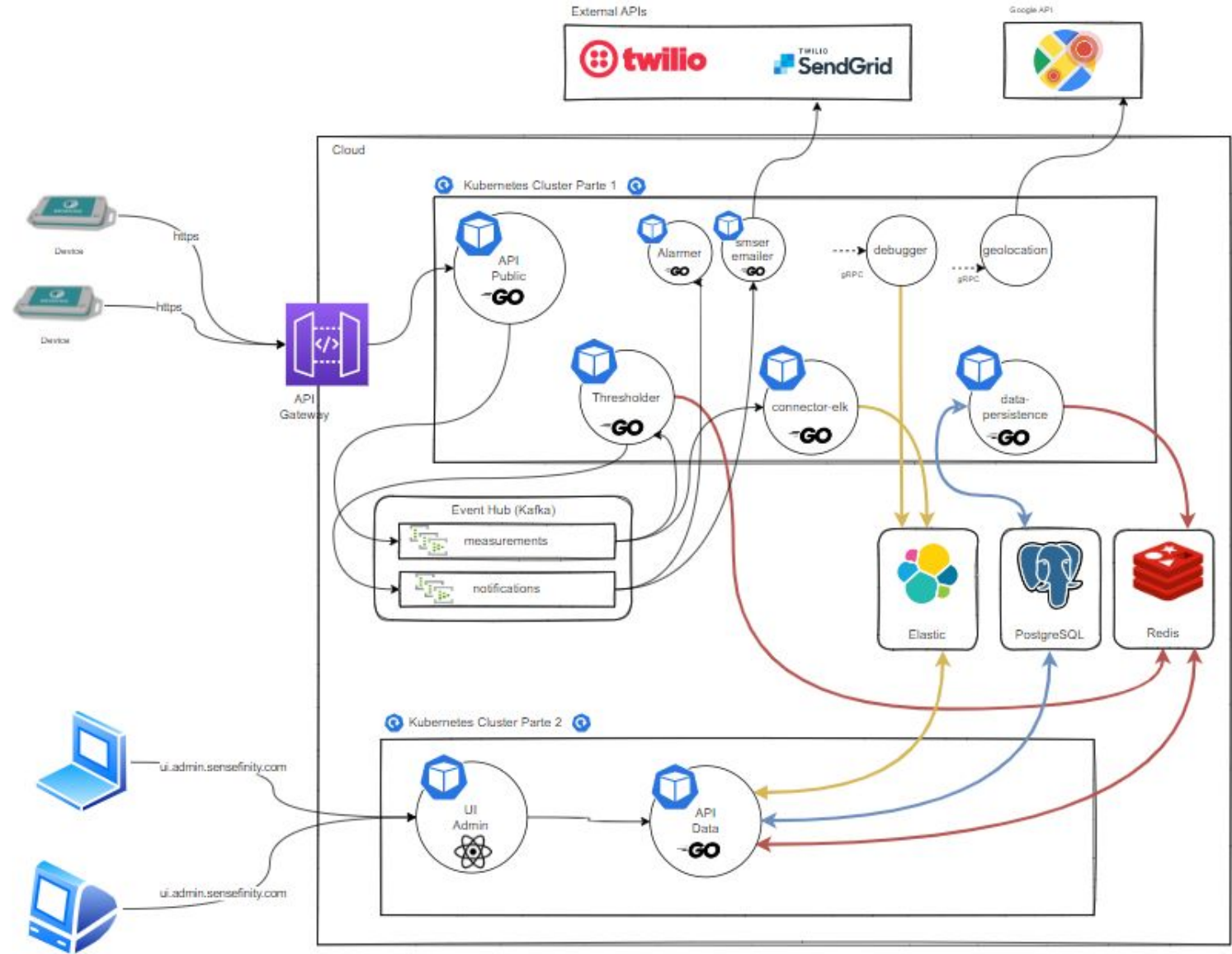
Mobile Application

Asset management
Notifications



The architecture

Microservices
 Scalable
 Event-Driven
 Northbound APIs



* A simplified version.

Big Data stack



elasticsearch

Scalable



kafka

Event driven



Go lang
microservices



Kibana

State of the Art
Reports

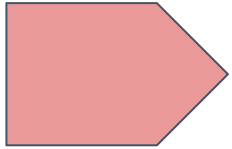


PostgreSQL

Transactional DB
for configurations

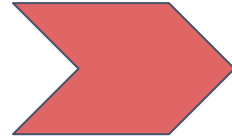
Roadmap

Roadmap



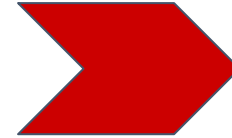
Stakeholders meetings:

Roles & responsibilities
Requirements refinement
Outputs & outcomes



MVP implementation

Development
Validation



PoC

Feedback
Adaptations
QA



Expansion

New Stakeholders
New Data Sets



Team

An Experienced Team

NOKIA



**Orlando
Remédios, CEO**

Nokia and Siemens
R&D Manager
Serial Entrepreneur

SIEMENS



**Rolf Glöckler,
COO**

CEO of Löwenbräu
VP of Danone



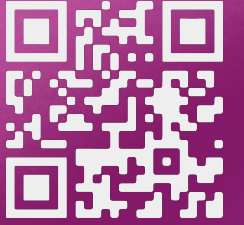
**Tiago Andrade,
CMO**

Nokia and Siemens BI
Lead
Serial Entrepreneur



**Hélder Castro,
CFO**

Siemens General Manager
Angel Investor



Emergency Management

